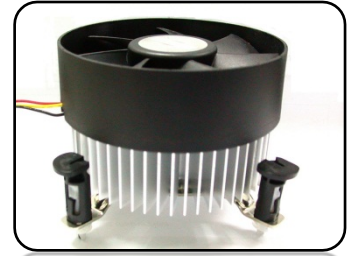




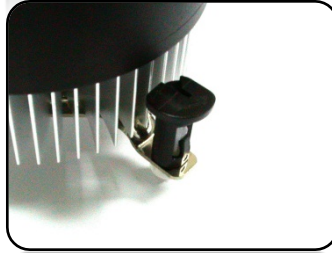
EVERCOOL
FAITH RELIABILITY TRUST



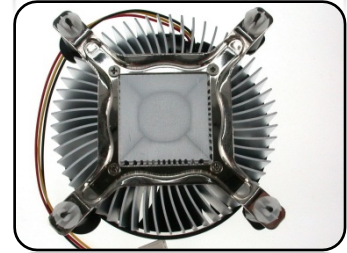
Crotch Fin



Side View



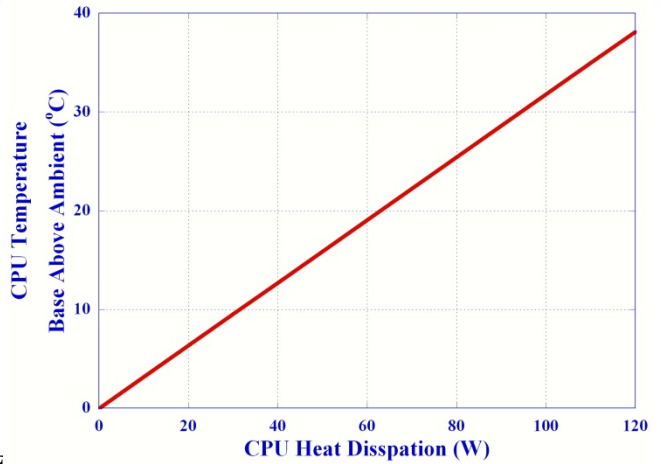
Push Pin Design



Bottom View

Product Specification

Application CPU	Intel 115X CPU
Overall Dimension	Φ95 X 61.4 mm
Heat Sink Material	Aluminum
Heat Sink Dimension	Φ91.5 X 36 mm
Bearing Type	SLeeve Bearing Fan Life Expectancy at 25°C 20000HR
Fan Speed (RPM)	2200±15%
Fan Airflow (CFM)	38.5
Static Pressure (Inch H2O)	0.1
Fan Noise Level (dBA)	<29
Rated Voltage (V)	12
Weight (g)	360



Features.

- Max TDP 95 W
- Crotch Fin Provides more Heat Dissipation Area
- Push Pin Design for Easy Installation

Unit : mm

